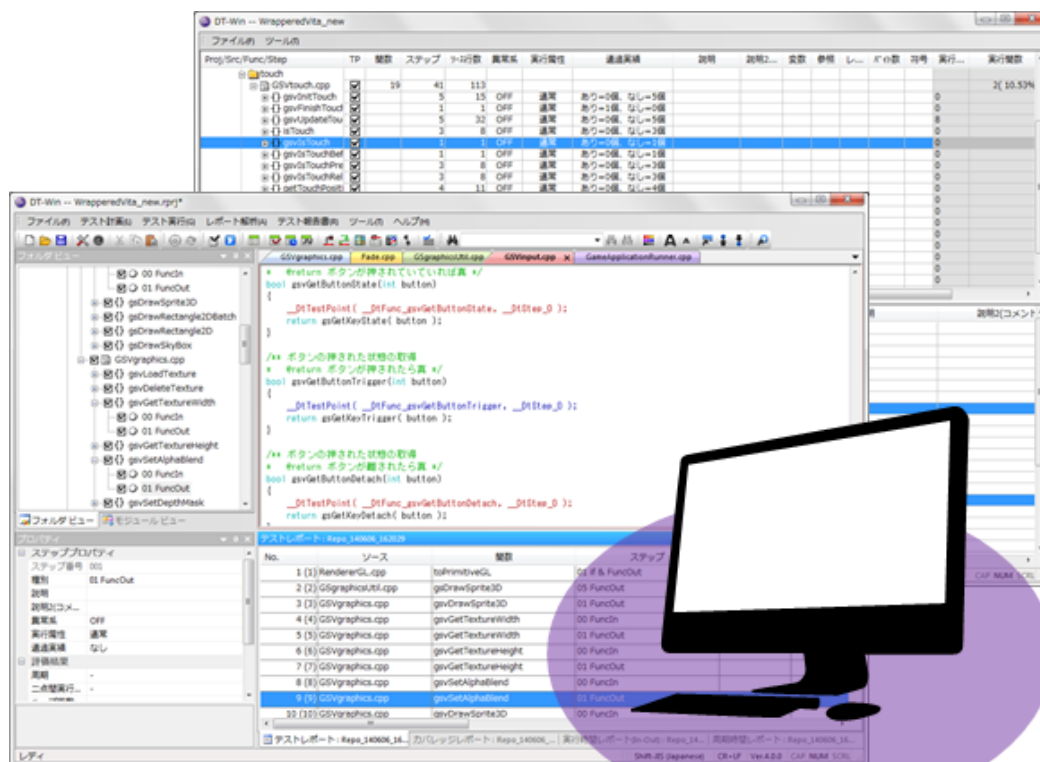


# Dynamic Test DT-win

## Install Manual



361 Fukui-cho, Ashikaga city, Tochigi prefecture 326-0338 Japan

Tel:+81-284-22-8791/ Fax:+81-284-22-8792

URL : [heartlanddata.com](http://heartlanddata.com)

## About this manual

- This manual explains how to install the DT-Win application and setup its license.
- This program and manual are protected by Copyright Law, and no reproduction, reprinting or modification whatsoever is permitted.
- The content and specification of this product are subject to change without prior notice.
- Please acknowledge that our company cannot assume any responsibilities for the result of use.
- Microsoft, Windows, and the Windows logo are registered trademarks in the United States and other countries of United States Microsoft Corporation.
- All other company names, logos, and product names, etc. specified are the trademarks or registered trademarks of each respective company.

## Contents

<b>1. Installation of DT-Win.....</b>	<b>- 1 -</b>
1.1. Supported platforms.....	- 1 -
1.1.1. Operating Systems .....	- 1 -
1.1.2. Computer spec.....	- 1 -
1.1.3. Memory spec.....	- 1 -
1.1.4. Hard disc spec.....	- 1 -
1.1.5. Display spec.....	- 1 -
1.2. Installation Step.....	- 2 -
1.3. Application setup .....	- 3 -
1.3.1. Prerequisite check and installation.....	- 3 -
1.3.2. Installation of application and each tool .....	- 5 -
1.4. Troubleshooting for The Installation.....	- 10 -
1.5. Uninstallation of DT-Win.....	- 11 -
1.5.1. Uninstall by “Add or Remove Programs” .....	- 11 -
1.5.2. Uninstall by “setup.exe” .....	- 11 -
1.5.3. Uninstall by “DT-Win Uninstaller” .....	- 12 -
<b>2. Setup of floating license .....</b>	<b>- 13 -</b>
<b>3. Change History .....</b>	<b>- 14 -</b>

## 1. Installation of DT-Win

This chapter helps you prepare for the DT-Win installation and explains how to install it.

### 1.1. Supported platforms

DT-Win and its tool support the following platforms:

#### 1.1.1. Operating Systems

- Windows 10
- Windows 11
- \* DT-Win supports both the 32 bit and 64 bit Versions.
- \* You need to install Windows Installer 3.1 and Microsoft.NET Framework 2.0 before installing DT-Win.  
(Without those, DT-Win cannot be set up. Please install them from Windows Update.)

#### 1.1.2. Computer spec.

- PC / AT compatible machine only.
- Must be equipped with a 2GHz Pentium 4 processor equivalent or higher.
- System with 2CPUs or more recommended.
- With USB2.0 port (supporting high-speed transfer). (USB1.0 is not supported.)

#### 1.1.3. Memory spec.

- Installed memory of more than 1GB is required.
- Installed memory of more than 2GB is recommended.

#### 1.1.4. Hard disc spec.

- 100MB or more of free space is required to install DT-Win.
- 2GB or more of free space is required to analyze the Test Report.  
1GB or more of free space is needed to collect the Test Report.

#### 1.1.5. Display spec.

- XGA resolution (1024 × 768 pixels) or more is needed.
- WXGA resolution (1024 × 768 pixels) or more is recommended.
- Please use by the default or the standard size for the font size.



### Caution

**Administrator privilege is needed to install the DT-Win.**

**Install with a user account which has the administrator privilege.**

**The installed application can then be used with a normal user account.**

## 1.2. Installation Step

---

The following step shows you how to install DT-Win on a Windows PC.

1. Execute "setup.exe" via the downloaded setup file.
  - \* It is advisable to ensure a stable environment, whereby no software is being executed and background software applications are closed when installing DT-Win.
2. Install DT-Win with the following displayed instruction:
3. After the installation, please conduct the license authentication.
  - \* At this step, the application starts as "Free Edition" if no license has been setup or a license is invalid.  
In case the license is valid, the application starts as "Standard Edition".  
Setup flow is referred in the other section.
4. After the license is recognized by the PC, boot up DT-Win.

## 1.3. Application setup

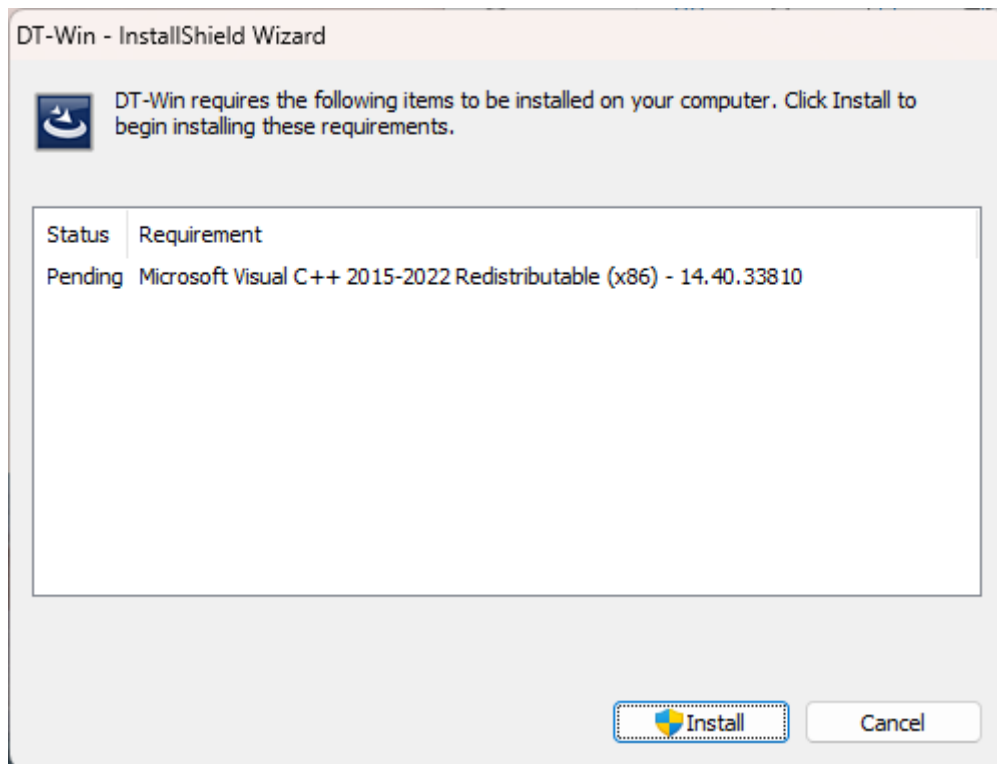
Execute "setup.exe", whereupon the installation of the DT-Win application and required files starts.

Execute the following steps and the setup is completed.

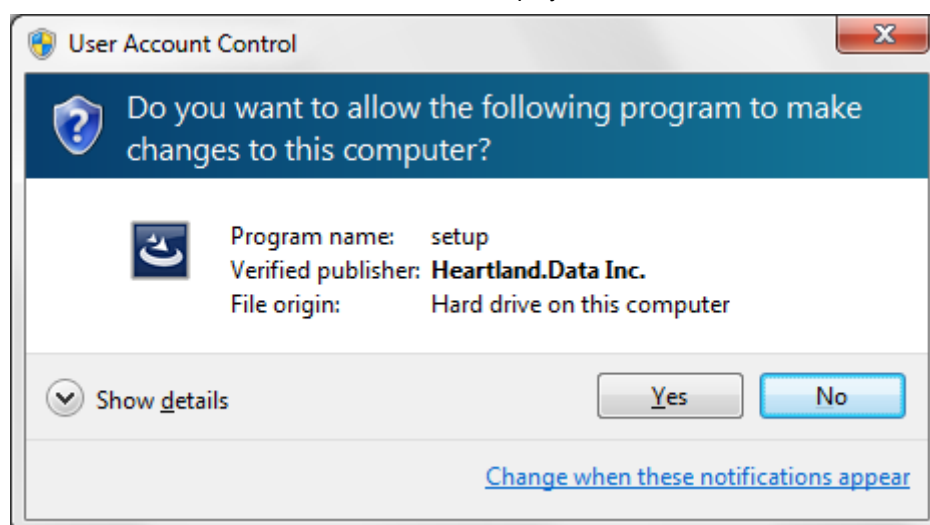
### 1.3.1. Prerequisite check and installation

When executing "setup.exe", the following window is displayed:

Install "Microsoft Visual C++ 2015-2022 Redistributable Package(x86)."

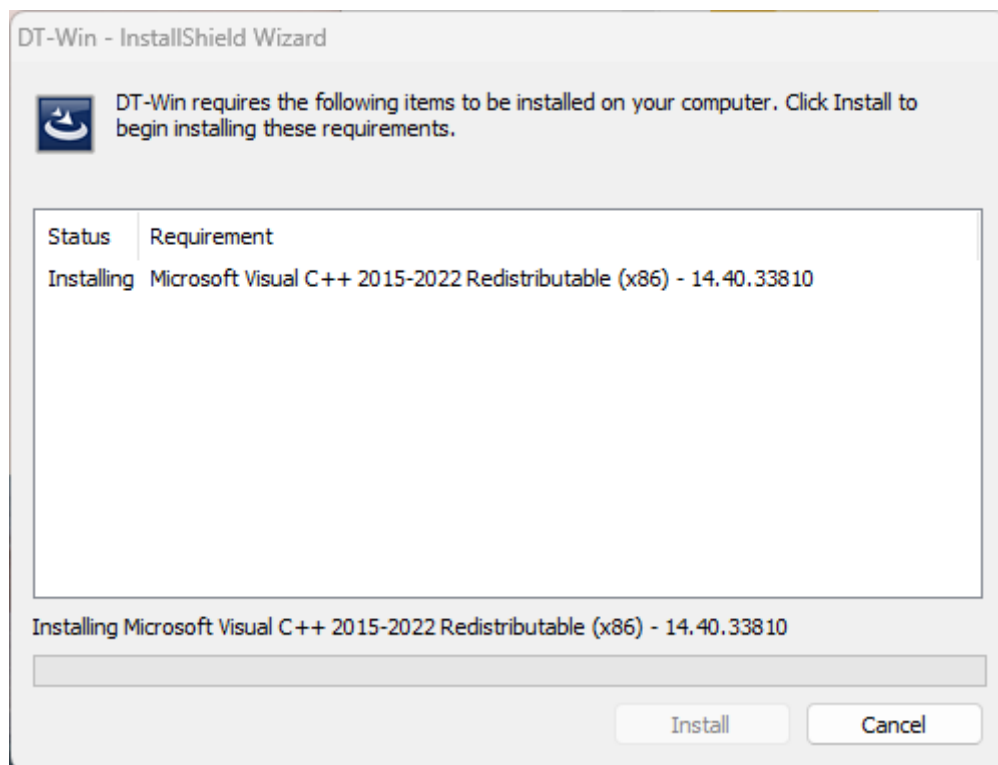


If you click the 'Install' button, 'User Account Control' will be displayed.



Please confirm the 'Verified Publisher' and click the 'Yes', then the installation will get started.

Microsoft Visual C++ 2015-2022 Redistributable is installed.



The installation will take a few minutes and it will be up to the machine situation.

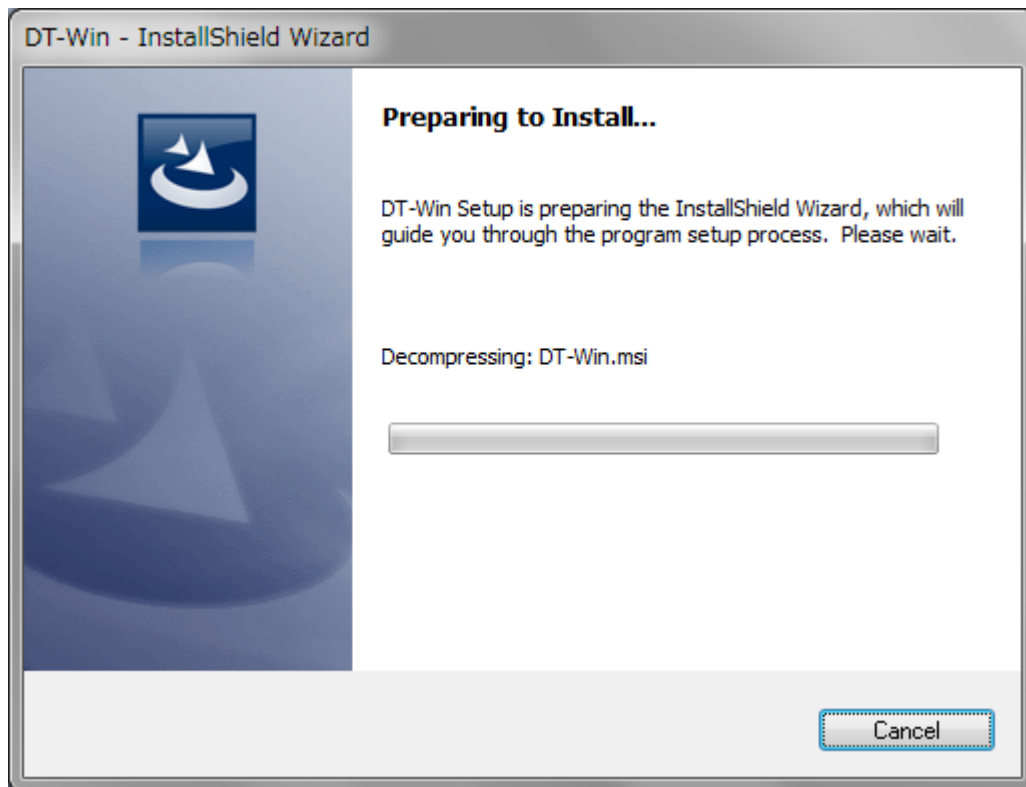
If it is finished, then the installation of DT-Win Application will begin.

You may be recommended to reboot the PC, but please continue installing without rebooting it.

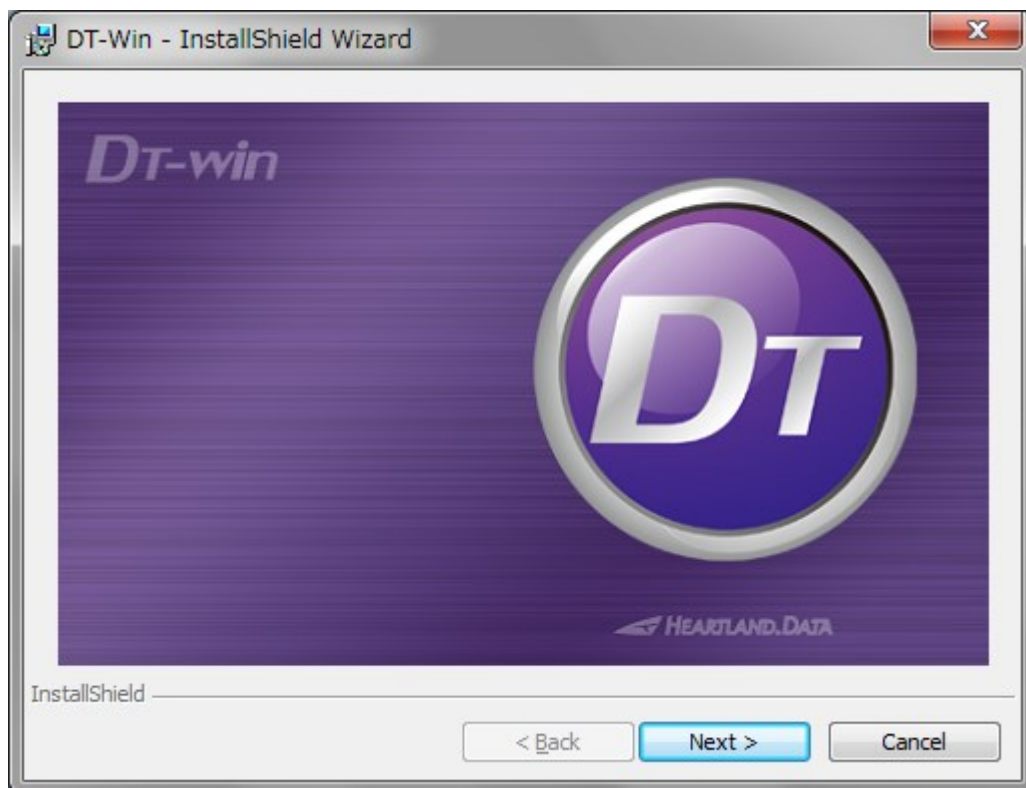
When the installation and setup of the DT-Win are complete, reboot it manually.

### 1.3.2. Installation of application and each tool

Start the DT-Win setup, and the setup file is expanded.



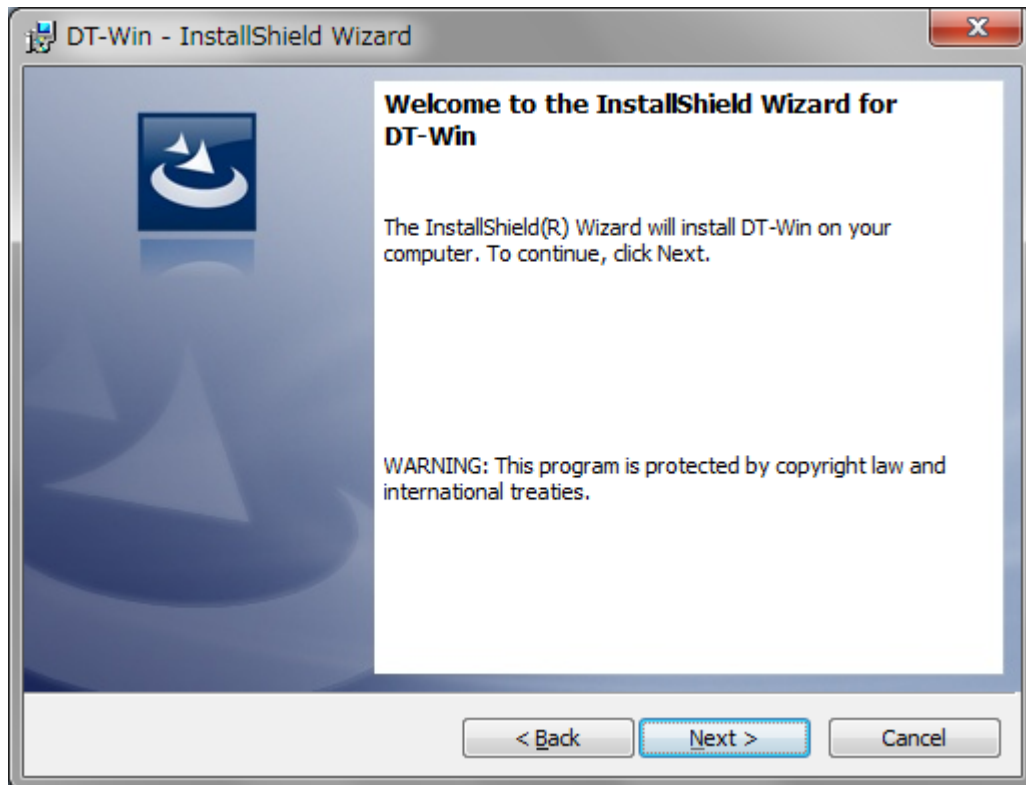
Then the expansion is complete, installation is ready and the splash view is displayed.



Click the "Next" button.

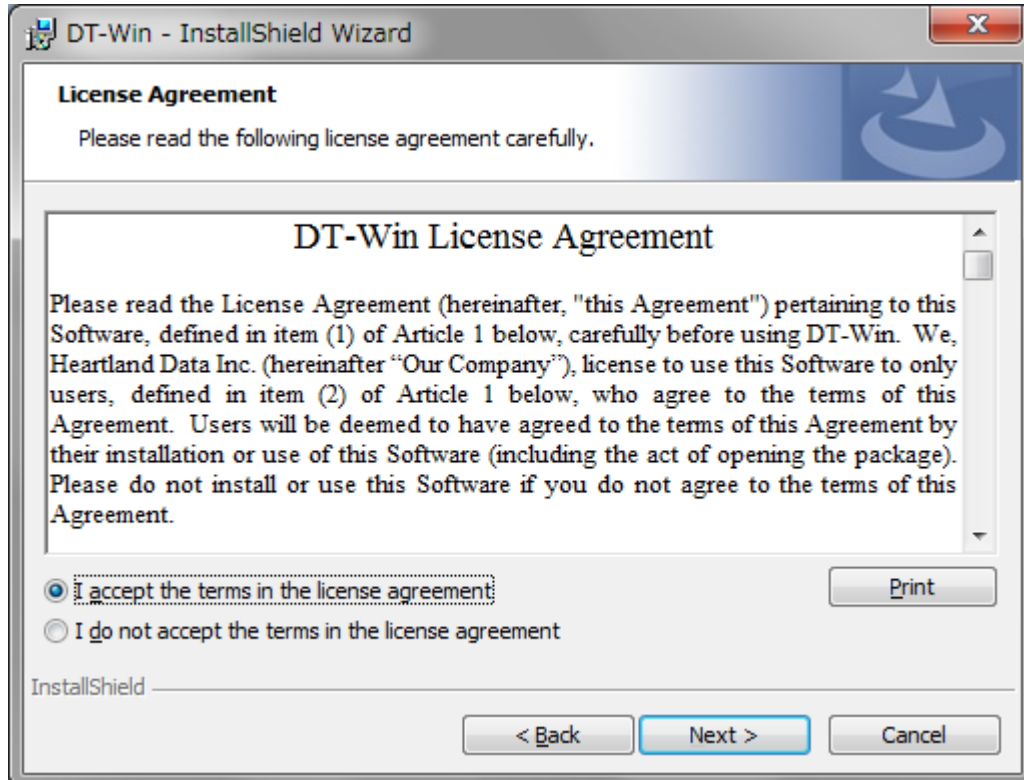


The welcome view is displayed.



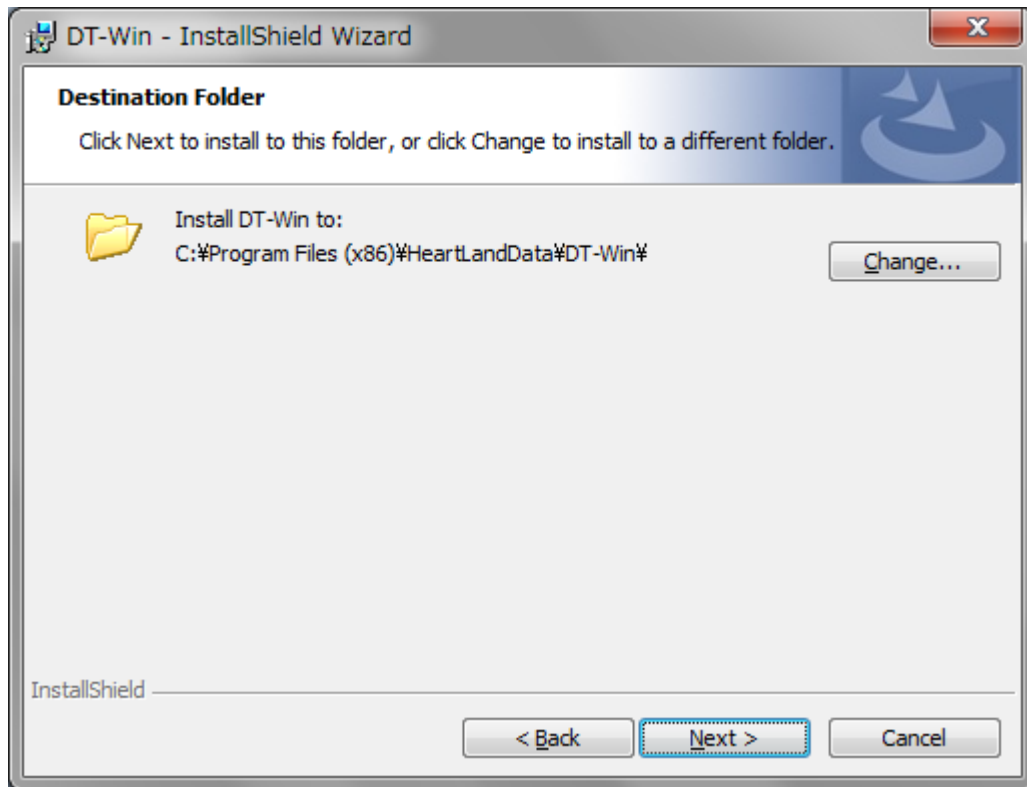
Click the "Next" button.

"DT-Win License Agreement" is displayed.



Please confirm the content and select "I accept the terms in the license agreement". Then Click "Next".

The “Destination Folder” view is displayed.

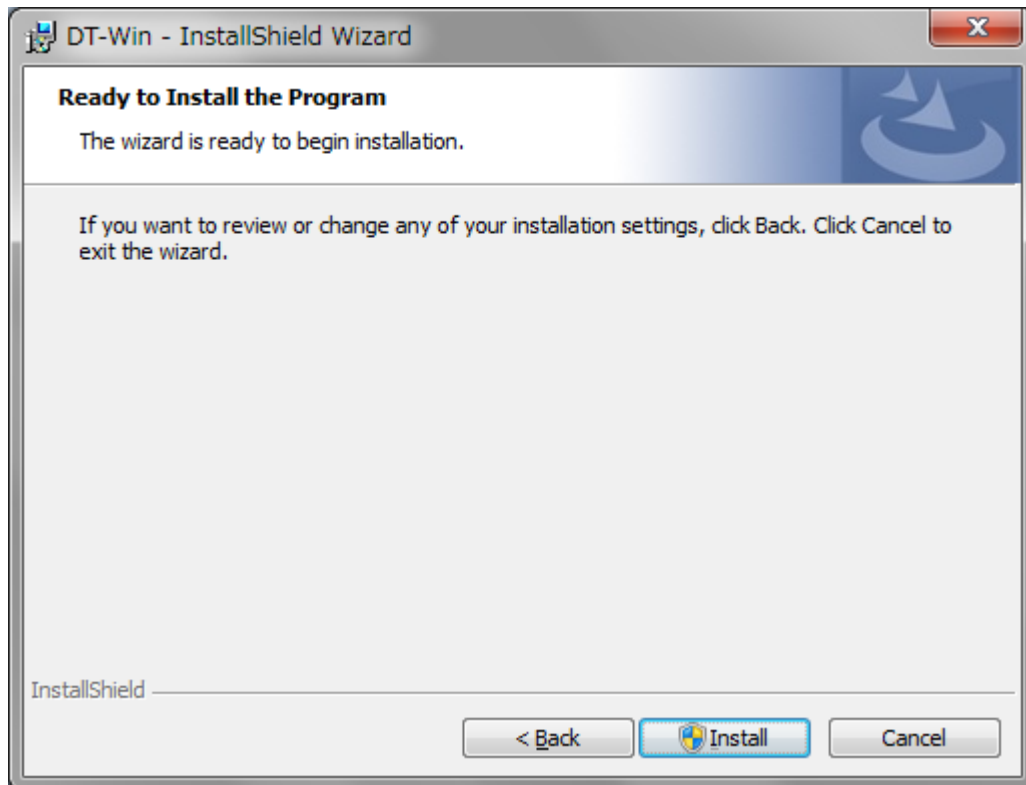


The default destination folder specified is “[Program Files (x86) Path]HeartLandData\DT-Win”.

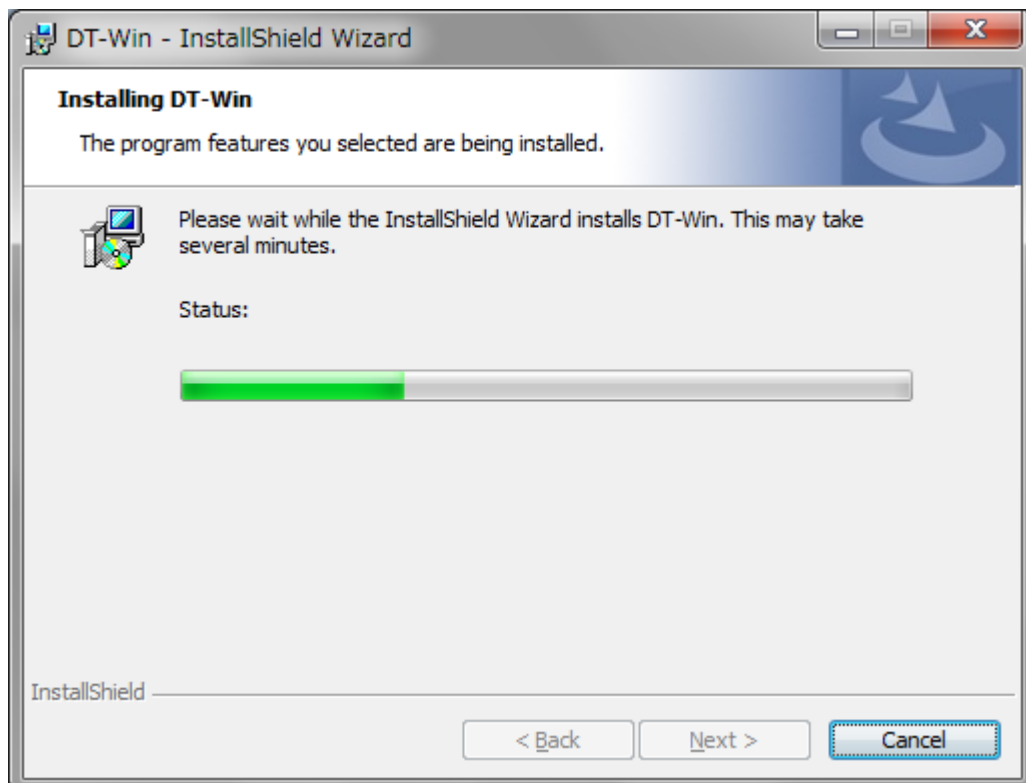
[Program Files (x86) Path] depends on the PC (driver name of the booted OS and so on). If you wish to change the specified folder, click the “Change” button and specify the folder.

After you have confirmed the installation folder, click the “Next” button.

The “Ready to Install the Program” view is displayed.

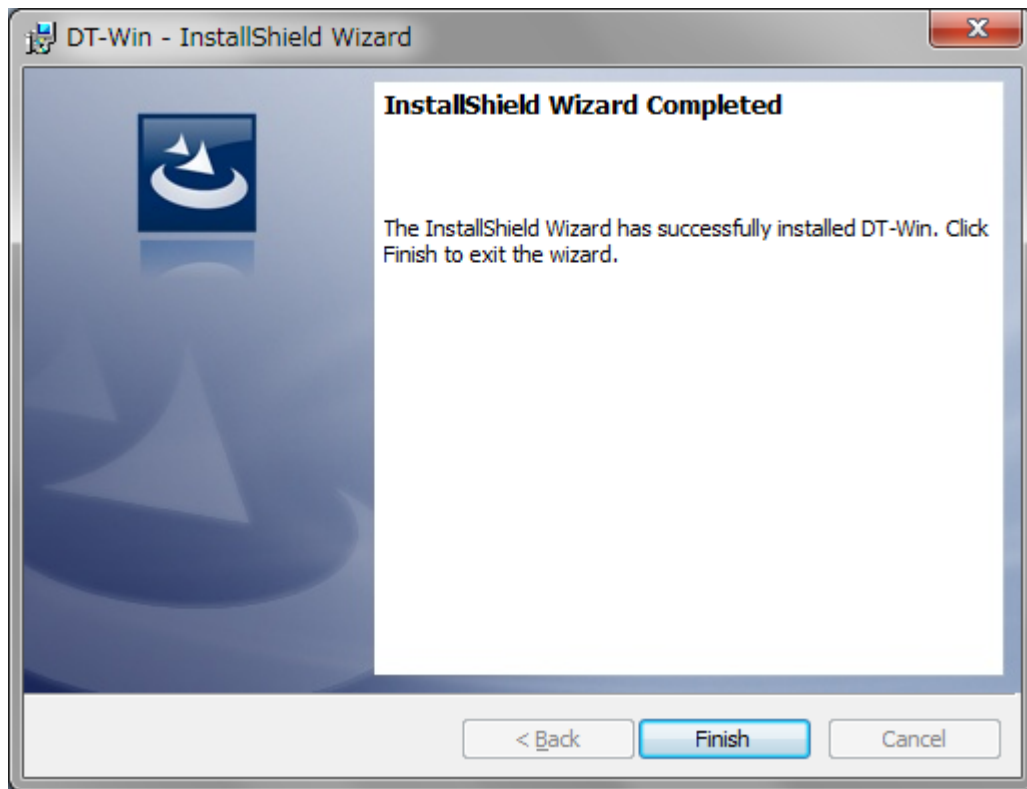


If you wish to install it with the current setup, click the “Install” button.



The installation time depends on your PC environment. It may range from a few seconds to a few minutes.

When the DT-Win installation is successfully completed, the following view is displayed:



Click the "Finish" button and the setup is complete.

## 1.4. Troubleshooting for The Installation

### <<Failure to install “Microsoft Visual C++ 2015-2022 Redistributable.”>>

If an error occurs before the application setup, or when booting up DT-Win, the installation of “Microsoft Visual C++ 2015-2022 Redistributable.” may have failed.

Please execute the installer of “Microsoft Visual C++ 2017 Redistributable” directly.

The installer is “ISSetupPrerequisites\vc\_redist\_x86.exe.”

If the installer does not work, your “vc\_redist\_x86.exe” may have a problem.

Please download “Microsoft Visual C++ Redistributable for Visual Studio 2015-2022” from the following URL and try to execute it:

<https://visualstudio.microsoft.com/vs/older-downloads/>

### <<If the DT-Win still does not work>>

Check with another PC.

If the DT-Win still does not work, please contact our support department:

Heartland.Data Inc.

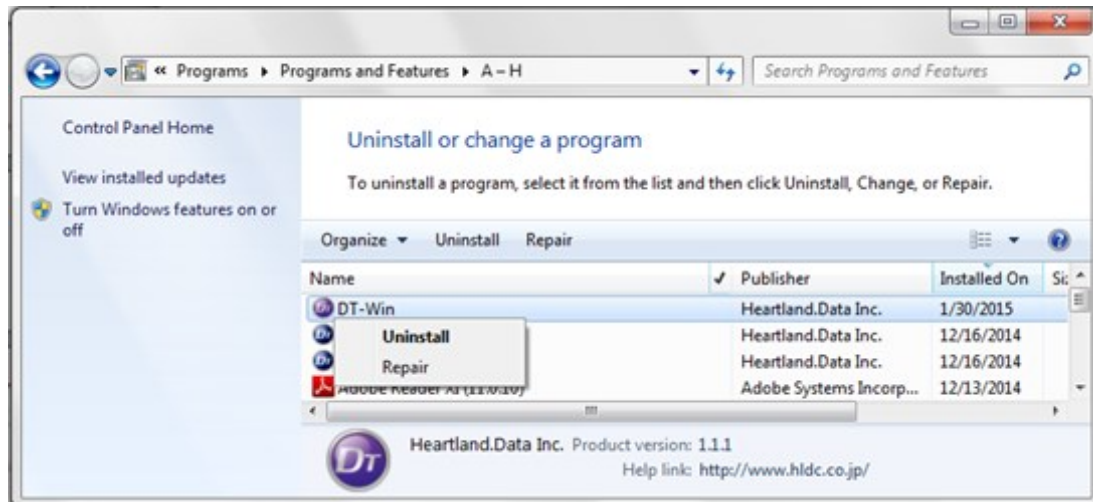
User Support

URL: [heartlanddata.com](https://heartlanddata.com)

## 1.5. Uninstallation of DT-Win

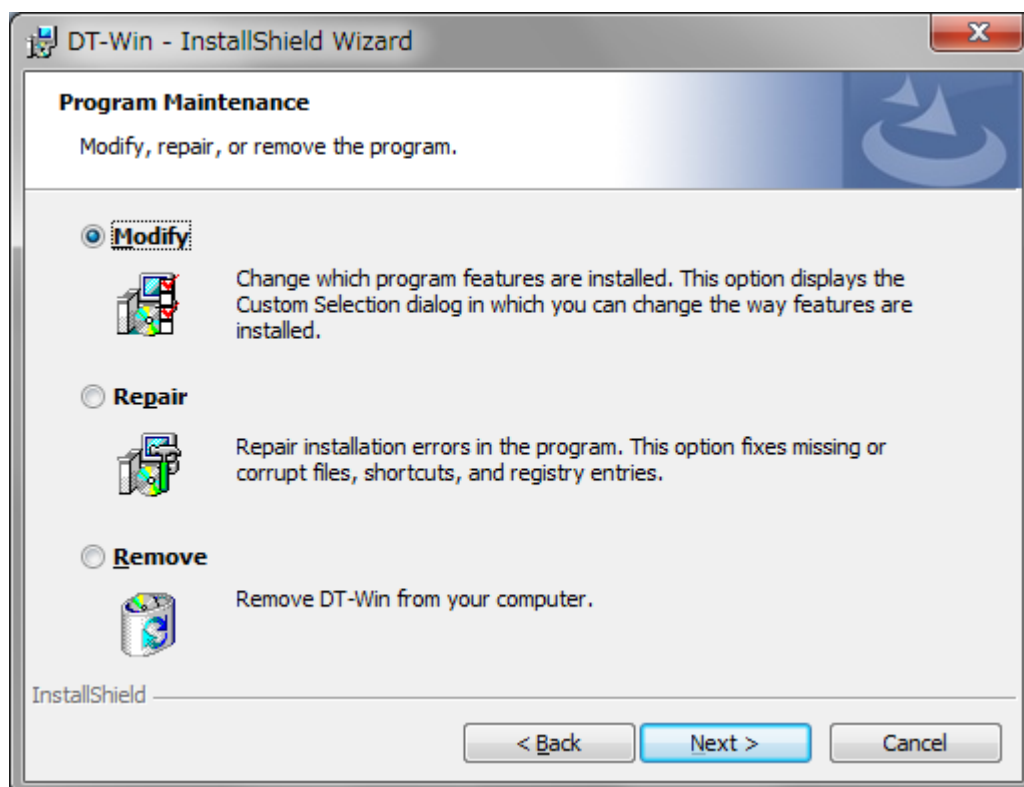
### 1.5.1. Uninstall by “Add or Remove Programs”

Select “DT-Win” from “Control Panel” -> “Add or Remove Programs”, and delete it.



### 1.5.2. Uninstall by “setup.exe”

Use “setup.exe” that can be used to install or uninstall DT-Win.

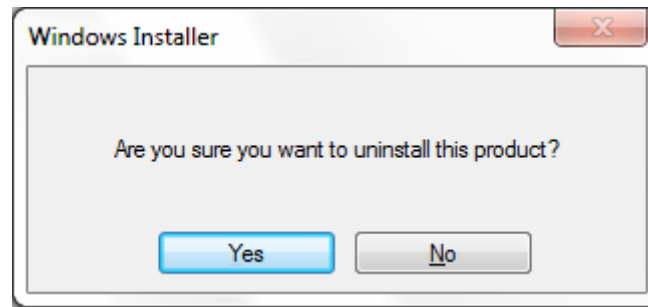


“Program Maintenance” view is displayed and then select “Remove” to uninstall DT-Win.

### 1.5.3. Uninstall by “DT-Win Uninstaller”

Select **[Program Menu > DT-Win > Uninstall]** to boot up the uninstaller.

DT-Win can be uninstalled by executing the uninstaller.



Select “Yes” in “Windows Installer” to continue execution.

## 2. Setup of floating license

Due to changes to the floating license system, the method for installing floating licenses has changed. We apologize for the inconvenience, but please contact our support for installation instructions.

Heartland Data Co., Ltd.

User Support

E-mail : [user@hldc.co.jp](mailto:user@hldc.co.jp)



### 3. Change History

Date	Version	Changed Summary (The values in [ ] refer to the item number and section)
April 27, 2018	Ver.1.0.0	Renewal of the Install manual.
June 24 2019	Ver.1.0.1	Updated the installation procedure. The support platform has been updated.
June 20 2025	Ver.1.0.2	Updated supported platforms. Deleted the item "Node-locked license USB dongle license".



361 Fukui-cho, Ashikaga city, Tochigi prefecture 326-0338 Japan

Tel: +81-284-22-8791 / Fax: +81-284-22-8792

URL: [heartlanddata.com](http://heartlanddata.com)